

ROTTWEILER VS CHIHUAHUA





In a world where misinformation and hate speech thrive, who defines the limits of violence? The victims? The perpetrators? What is violence, after all? The “Rottweiler” question is back, this time with democratic intentions. But aren’t they just the same dogs with different collars?

Text | Guillermo Heras

Translation | Tiago Fernandes

Version | Ricardo Simões

Director | Elisabete Pinto

Co-creation & dramaturgy | Adriel Filipe, Alexandre Calçada, Elisabete Pinto, Marta Bonito, Ricardo Ribeiro

Sound Design | José Prata

Set Design & Costumes | Adriel Filipe, Elisabete Pinto

Set Construction & Props | Adriel Filipe, José Esteves

Cast | Adriel Filipe, Alexandre Calçada, Marta Bonito, Ricardo Ribeiro

Light Design | Nuno Almeida

Age Rating: +14

Approximate Duration: 60 min without interval





TEASER







LUZES E
O DE VISTA
SOMBRA

ZES E
MBRAS

TECHNICAL RIDER



This rider is an integral part of the agreement for the performance of the show. All equipment contained therein must be provided by the structure hosting the show, except in the cases indicated (TNCDV).

The conditions and equipment listed below represent the ideal configuration for the performance of the show, and any changes or incompatibilities must be negotiated with the Production and Technical team of Teatro do Noroeste – CDV, to find possible solutions.

SOUND & VIDEO STAGE

SOUND:

- 1 SM58 Microphone
- 2 SIDE fills (Hanged behind the set)
- 1 Point Source Speaker (Upstage left)
- Sound mixer
- Sound mixing board (TN-CDV)
- Laptop (TN-CDV)

VÍDEO:

- 1 Video Projector 4k, 1000AL (Retro-projected to a 240cm x 120cm screen)
- HDMI cable 10m

- Minimum dimensions:

- Depth: 9 m
- Width: 10 m
- Height: 6 m
- Downstage center: 8 m

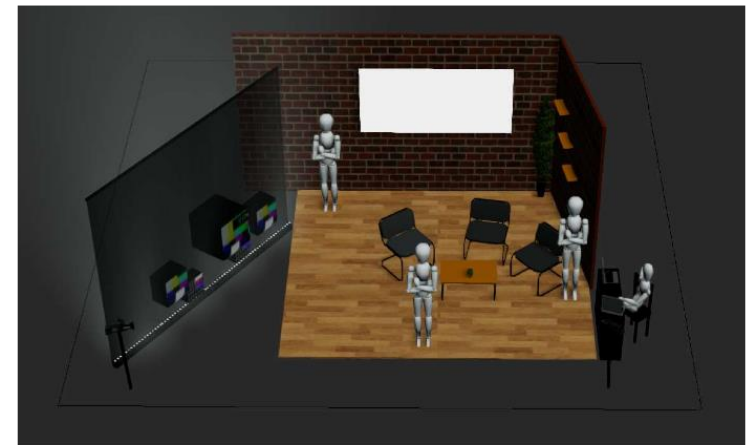
- Blackbox
- Possibility of complete blackout
- Drapery: main curtain open, black backdrop and borders making a U shape (open upstage left)

STAGE REQUIREMENTS

- 3 motorized flybar to lighting
- 1 electrified flybar to hang SIDE fills
- 1 electrified flybar to hang video projector (to confirm accordingly with que venue)
- Borders (for lighting and one for scenography)

SET

- 4 woden panels 3m x 1m (TN-CDV)
- 1 woden panel 3m x 0,50m (TN-CDV)
- 1 woden panel 3m x 0,60m (TN-CDV)
- 1 woden panel 2,40m x 1,20m (TN-CDV)
- 1 woden panel 1,20m x 0,60m (TN-CDV)
- 1 projection screen 2,40m x 1,20m (TN-CDV)
- 6 wooden Wall jacks + 3 iron ones (TN-CDV)
- 2 linoleum flooring roles 2m x 5m (TN-CDV)
- 4 rotating chairs (TN-CDV)
- 1 centre table (TN-CDV)
- 1 regie table (TN-CDV)
- 2 filming cameras + tripods (TN-CDV)
- 1 bush (TN-CDV)
- 3 wall racks (TN-CDV)
- 2 iron bars (2m) (TN-CDV)
- 1 ceiling lamp (TN-CDV)
- 1 curtain (TN-CDV)
- 1 electrified box 60 x 60 x 60 cm (TN-CDV)
- 2 electrified boxes 45 x 45 x 35 cm (TN-CDV)
- 2 electrified boxes 35 x 35 x 20 cm (TN-CDV)
- 5 iron table legs for boxes (TN-CDV)
- 1 carpet 2m x 1,5m (TN-CDV)
- Box with props (TN-CDV)
- Laptops & cables (TN-CDV)



SET UP

The material from the host venue must be on the stage when the technical team from Teatro do Noroeste – CDV arrives.

There must be scaffolding, a lifting platform or a ladder for adjusting the light.

There may be a need to screw scenery elements to the floor.

ASSEMBLE TIMING: approximately 10h

DESASSEMBLING TIMING: approximately 2h

WORK PLAN*:

Day 1

Morning: Lighting and Scenography | Afternoon: Scenography, Sound, Vídeo and Light Tuning

Day 2

Afternoon: Programming adjustments, finalizing assembly and rehearsal | Evening: Show and disassembly

TECHNICAL TEAM REQUIRED FOR THE HOST SPACE: Lighting Technician, Sound Technician, Stage Technician/Engineer

TECHNICAL TEM OF TEATRO DO NOROESTE - CDV: 1 Light and Sound Technician, 1 Produce, 1 Editing Technician

*The work plan and technical team of Teatro do Noroeste - CDV may be adjusted according to the distance from the performance location and if space conditions require adaptations.

TRANSPORT

(PORTUGAL) Transport of the scenography, technical and artistic team is carried out in two vehicles:

- **1 passenger car**
- **1 transport and passenger van**

The scenography's loading and unloading schedule will be coordinated with the host venue, which must guarantee an unloading location.

A parking space will be required close to the performance location for both vehicles.

TEAM

- **Elisabete Pinto (director)**
- **Adriel Filipe (Technician/Cast)**
- **Alexandre Calçada (Cast)**
- **Ricardo Ribeiro (Cast)**
- **Marta Bonito (Cast)**
- **Light designer (tbc)**
- **Stage technician (tbc)**

ACCOMMODATION

- ACCOMMODATION MUST BE IN INDIVIDUAL ROOMS WITH PRIVATE BATHROOM AND BREAKFAST IN HOTEL*:

1st/2nd/3rd night: 7 single rooms

- THE RESTAURANT MUST HAVE MEAT, FISH AND VEGETARIAN OPTIONS*:

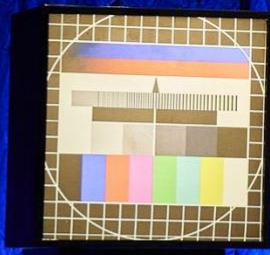
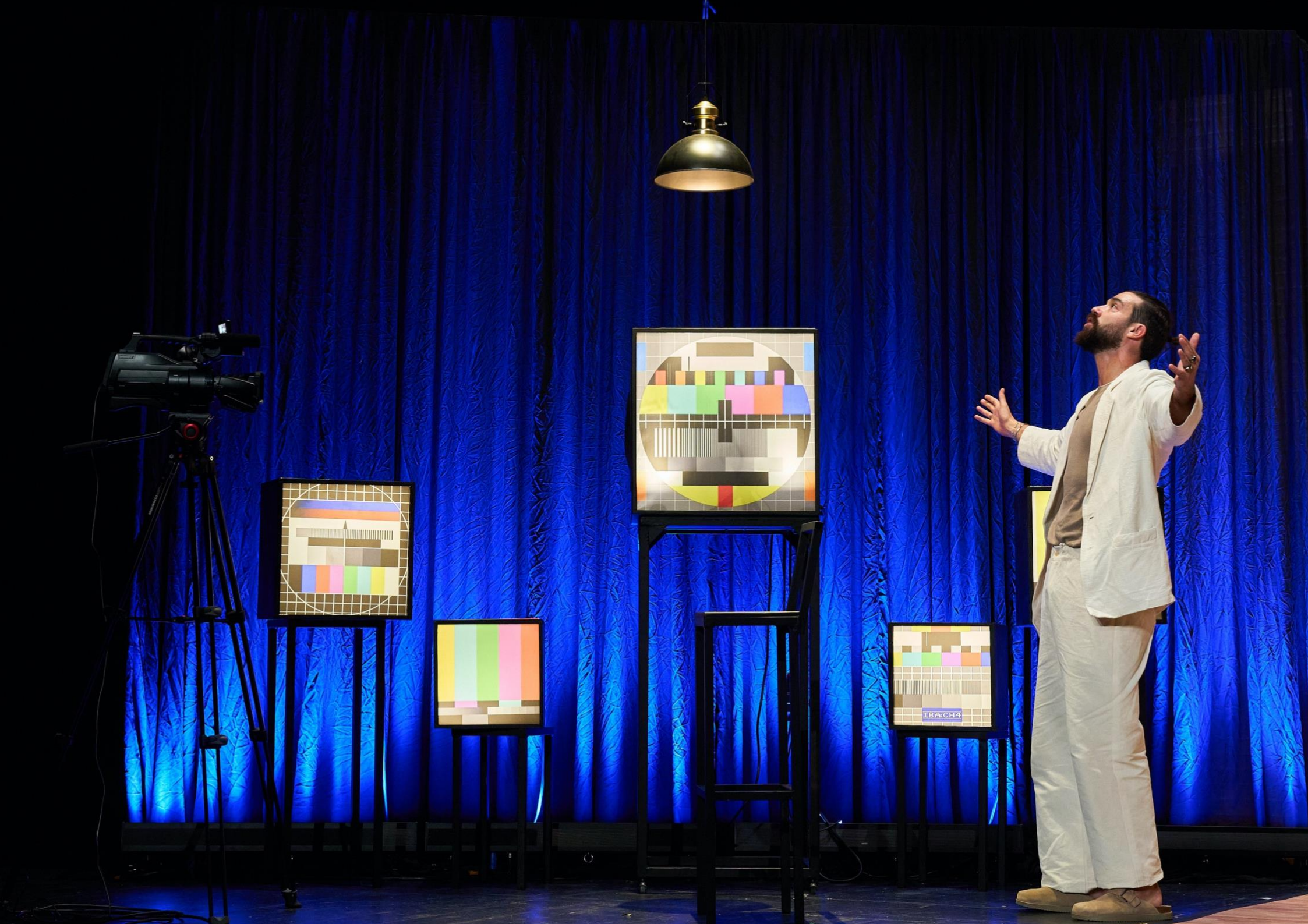
Day 1 and 2 | 7 lunches e 7 dinners

* The accommodation and meal plan may be adjusted according to the distance from the performance location and if space conditions require adaptations.

OBSERVATIONS

- We would appreciate the provision water for the technical and artistic team during work and presentations.
- It will be necessary to glue gaffer and/or double-sided tape to the stage
- During the show, a prop made of sugar is used, which may spread beyond the stage areas.
- A bucket of hot water and a mop will be needed at the end of each performance.
- A stove and refrigerator will be needed to build a prop (depending on the distance from the performance location)
- The opening of the room should be done, as close as possible to the show time.
- Please provide towels in the dressing rooms.





CONTACTS

Artistic Direction | **Ricardo Simões**
ricardosimoes@tmsm.pt

geral@tmsm.pt
+351 967 552 988

